

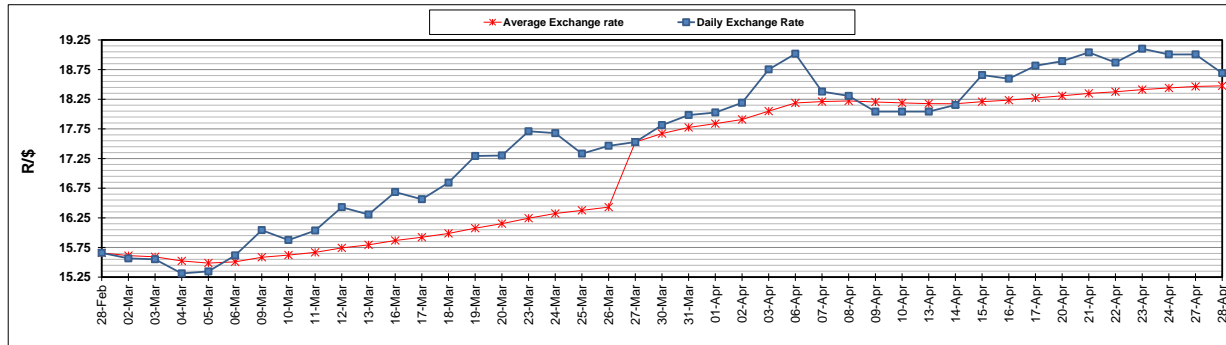
	PETROL 95 ULP	PETROL 93 ULP & LRP	DIESEL 0.05%	DIESEL 0.005%	ILL. PAR.
GAUTENG PUMP PRICE (SA c/l) AS FROM 01/04/2020	1,396.000	1,376.000	-	-	-
WHOLESALE PRICE (SA c/l) AS FROM 01/04/2020	-	-	1,269.560	1,273.960	672.828
SINGLE NATIONAL MAXIMUM RETAIL PRICE	-	-	-	-	840.000
BASIC FUEL PRICE - 28/04/2020 (SA c/l)	265.517	253.019	240.488	247.706	126.614
PRESS RELEASE CONTRIBUTION TO BFP 01/04/2020 - 28/04/2020 (SA c/l)	448.770	438.770	518.630	523.030	468.128
UNIT OVER/(UNDER) RECOVERY - 28/04/2020 (SA c/l)	183.253	185.751	278.142	275.324	341.514
AVERAGE BASIC FUEL PRICE 27/03/2020 - 28/04/2020	303.123	295.518	383.294	393.194	275.948
AVERAGE UNIT OVER/(UNDER) RECOVERY 27/03/2020 - 28/04/2020	174.239	170.278	156.857	151.489	218.006

ANALYSIS MOVEMENT OF AVERAGE OVER/(UNDER) RECOVERY

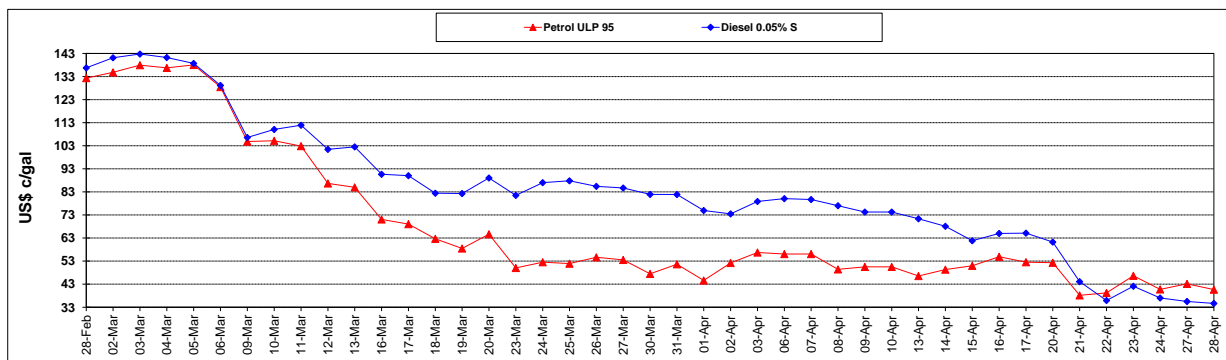
	PETROL 95	PETROL 93	DIESEL 0.05%	DIESEL 0.005%	ILL. PAR.
- MOVEMENT IN INTERNATIONAL PRODUCT PRICES	207.803	203.001	199.300	195.027	248.562
- MOVEMENT IN EXCHANGE RATE	(33.566)	(32.723)	(42.442)	(43.539)	(30.556)
AVERAGE UNIT OVER/(UNDER) RECOVERY 27/03/2020 - 28/04/2020	174.239	170.278	156.857	151.489	218.006

R/\$ EXCHANGE RATE - (R/\$18.6910 - 28/04/2020)

EXCHANGE RATE USED IN BASIC FUEL PRICE



INTERNATIONAL PRODUCT PRICES OF BASKET USED IN BASIC FUEL PRICE



BASIC FUEL PRICE IN SA CENTS PER LITRE

